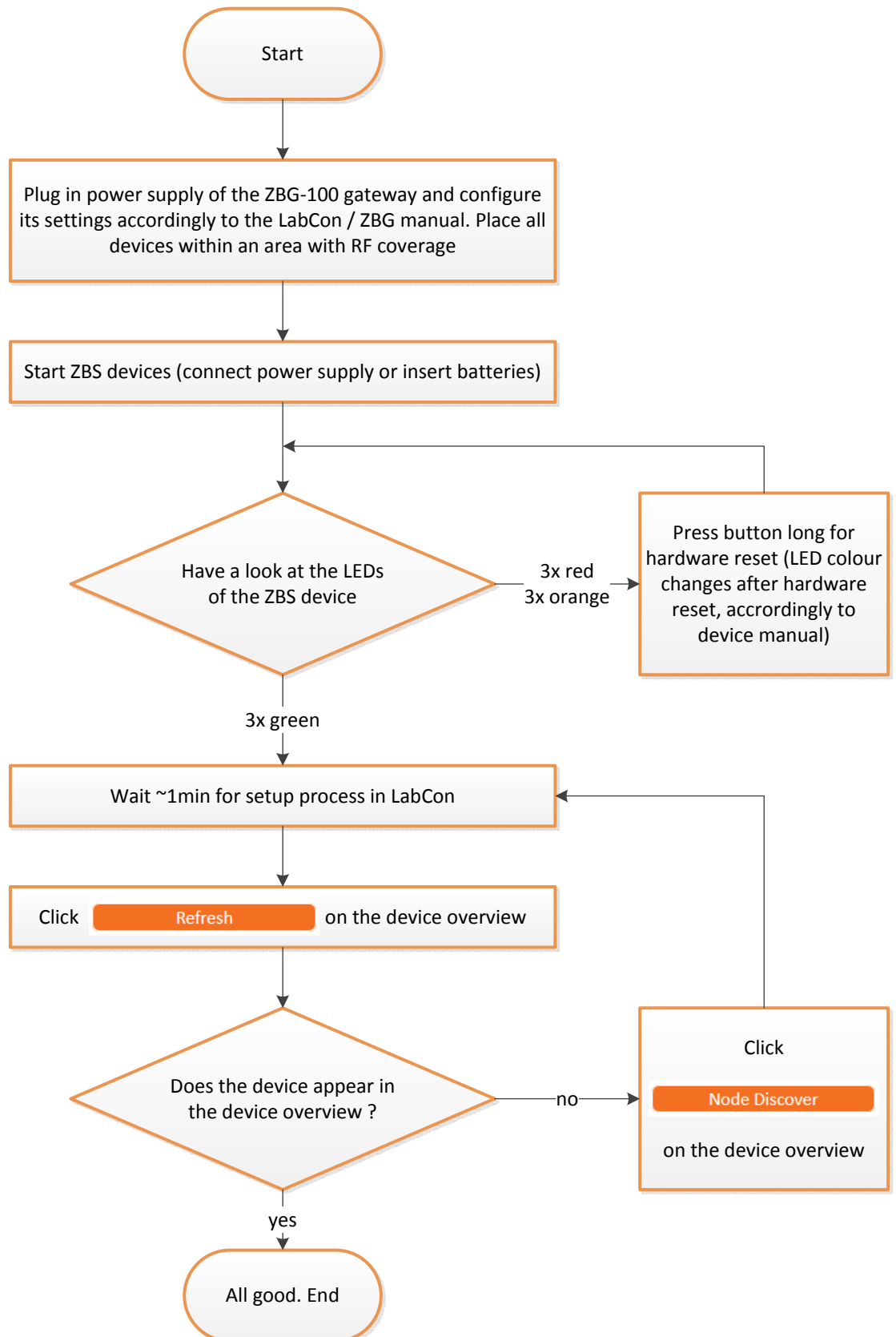


Troubleshooting Guide: What to do when LabCon doesn't recognize ZBS devices

Please ensure following Preconditions:

- (1) No other ZigBee network coordinator, open ZigBee networks or open routers shall exist.
- (2) No other ZigBee equipment reconfigured the ZBS devices.

If happened, read the ZBS family handbook carefully and configure the ZBS devices to factory default.



Note: If you want to connect more than 3 devices to the ZBG-100 remember to integrate the license file