

ZBG-100

Installation / Update of LabCon-Firmware (Image)



1 History

DVers.:	Date	Modified by	Changes	Status
01	01.11.2012	PI-TL	Born	Release
02	11.09.2014	PI-FG	All chapters and footer brought up to date	Release



2 Table of Contents

1	History	2
2	Table of Contents.....	3
3	Legal.....	4
4	Definition of Symbols.....	5
5	Preparation.....	6
6	Update.....	7
6.1	Copying the Firmware Image to a USB Stick.....	7
6.2	Installing the Firmware to the ZBG-100 Gateway	9
7	List of Figures	10

3 Legal

© 2014 pikkerton GmbH

All rights, including translation into foreign languages, are reserved. No part of this publication may be reproduced in any form (by printing, photocopying or any other method) or processed using electronic systems, copied or distributed without the written permission of pikkerton GmbH. The passing on and copying of this document, use and communication of its contents are prohibited unless explicitly permitted. Violators are liable for all damages. All rights reserved in the event of patent, utility model or design. Pikkerton GmbH is not liable for technical or editorial errors or omissions contained herein. Furthermore, they shall not be liable for any damages that are directly or indirectly attributable to the furnishing, performance or use of this material.

Changes to the content herein is subject to change without notice. The Information in this publication is given without responsibility for accuracy and completeness. In particular, it contains no such information to be guaranteed. The user carries all risk arising from the use of this information.

Please note that all manual software and hardware names, and trademarks of the respective companies are generally subject to trademark, brand or patent protection.

pikkerton GmbH
Kienhorststr. 70
13403 Berlin
Germany

Telephone: +49 (0) 30 3300724 -0
Fax: +49 (0) 30 3300724 -24
Internet: www.pikkerton.de

4 Definition of Symbols



The attention symbol refers to actions, which can cause damage to material or equipment.



The notice indicates necessary conditions for error-free operation. It picks out important details, makes the job easier, and gives tips and advice on the optimal use of hardware and software.

5 Preparation

To deploy the image to the ZBG-100, you need the following:

- PC with Windows XP or newer OS and USB interface
- Administrative rights
- USB-Stick (≥ 1 GB)
- HDD Raw Copy from HDDGURU (Freeware)
<http://hddguru.com/software/HDD-Raw-Copy-Tool/>

The Tool HDD Raw Copy is available in two different versions: one for installation or portable.

6 Update

6.1 Copying the Firmware Image to a USB Stick

Connect the USB stick to your PC and start the application HDD Raw Copy.

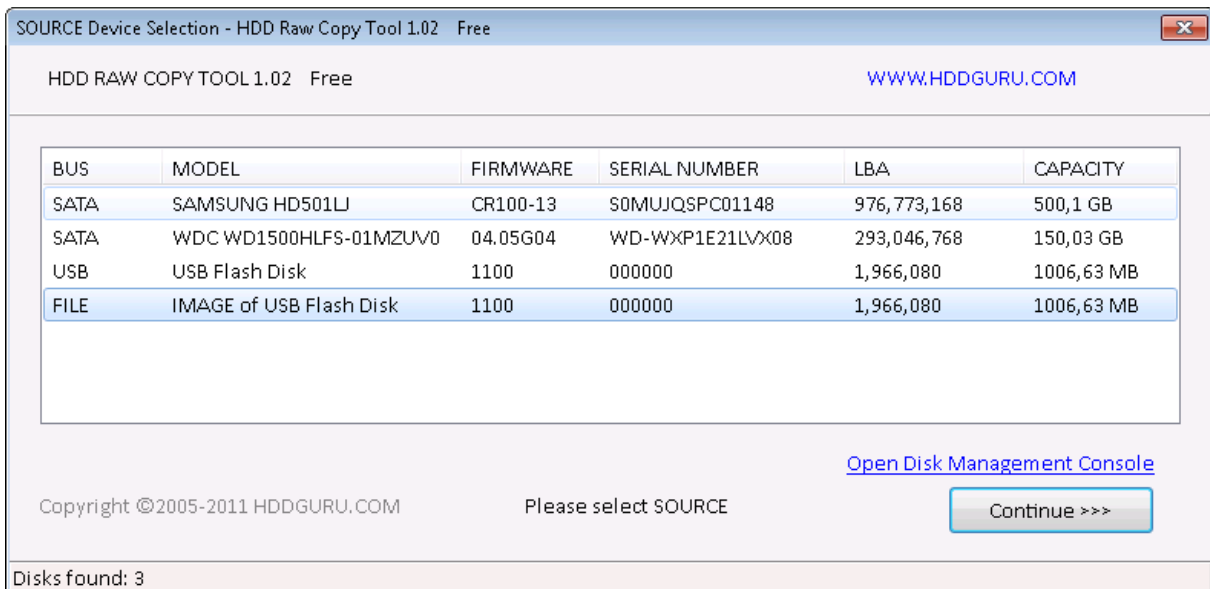


Figure 1 – Source Device Selection

With a double click on “FILE” a dialog window will be opened where you can choose the source image (refer to figure 1). A click on “Continue >>>” will lead to the target device selection (refer to figure 2).

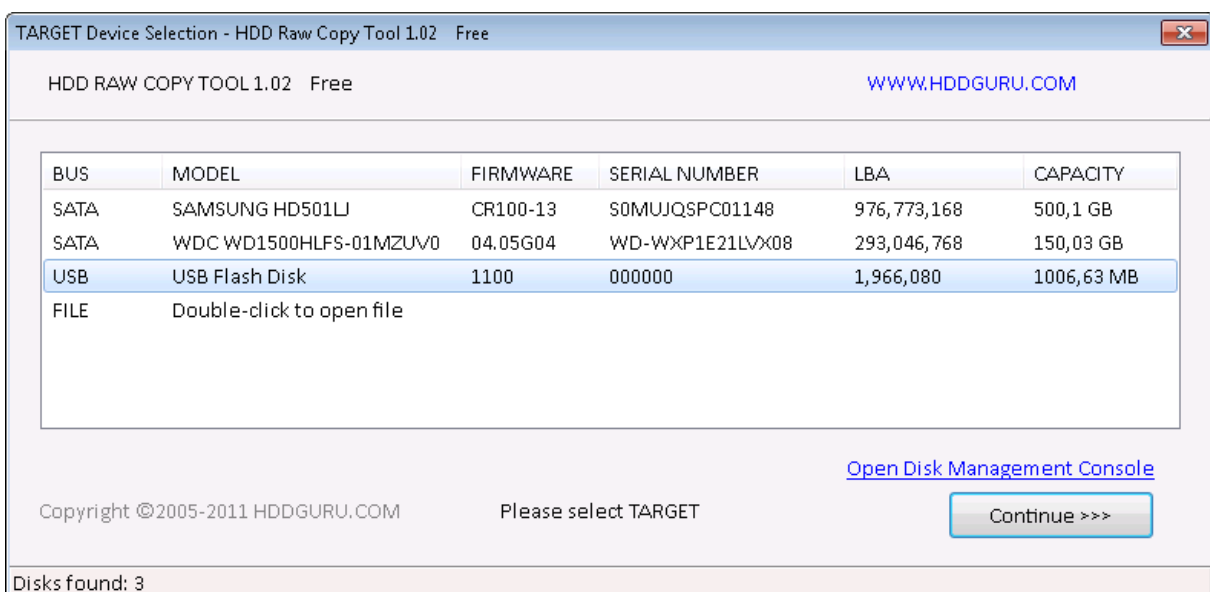


Figure 2 – Target Device Selection

Choose your USB stick here.



All data on the USB stick will get erased.

Click on “Continue >>>” will lead to the next window:

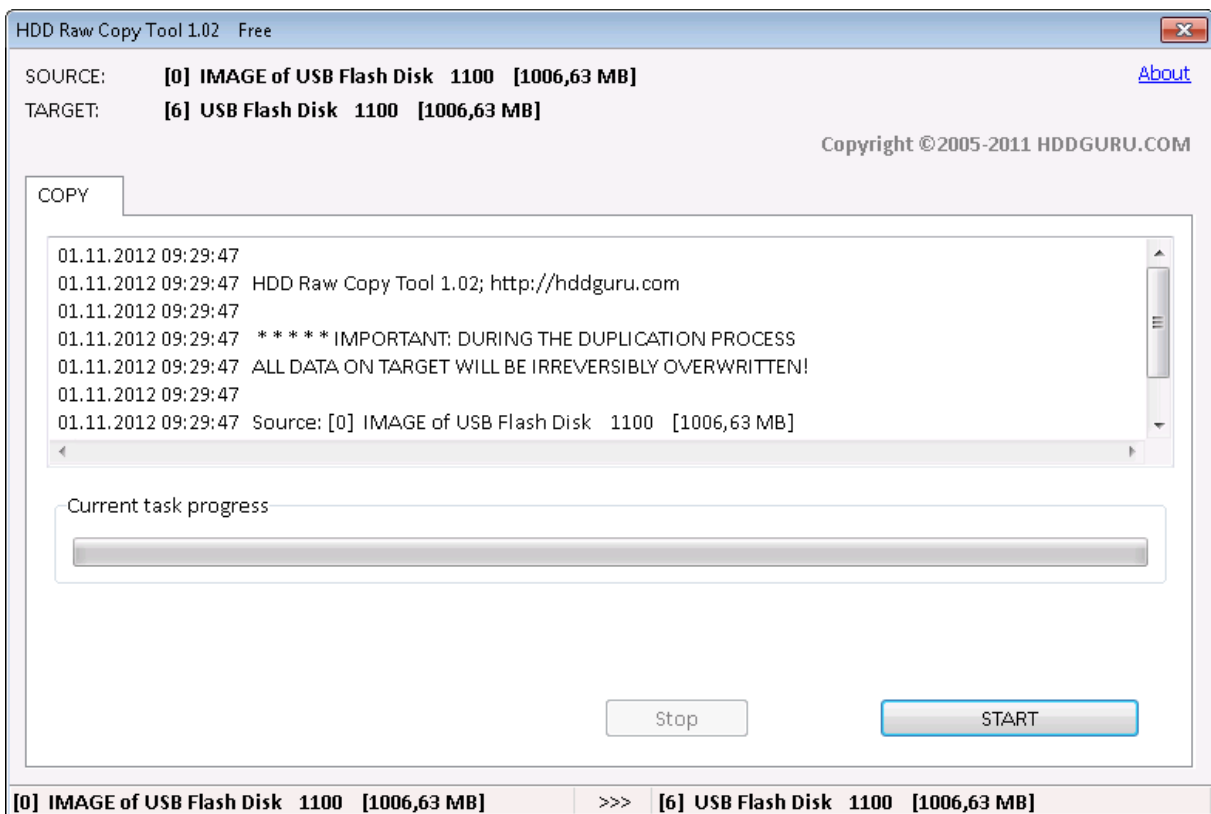



Figure 3 – Copying the Image to the USB Stick

A click on “START” gets the copy process started after you’ve confirmed the upcoming dialog window.

The USB stick can be removed after the message “100% complete” appears (do a “safe removal” to avoid data loss).

6.2 Installing the Firmware to the ZBG-100 Gateway

Unplug the power cable from the ZBG-100. Connect the USB stick (the one prepared in the previous chapter) to the ZBG-100 (bottom side) and re-plug the power cable afterwards. Attend to the device LEDs which indicate the state of the firmware update process as shown in the following table:

		Max. Duration [min]	Action
Blue LED	Red LED		
Off	Off	2	Linux kernel boot running
On	Off	1	Linux OS boot running
Off	Blinks	7	Firmware update running (data is being copied to internal flash)
Blinks	off	-	Firmware update finished

When the firmware update has finished, unplug the USB stick from the ZBG-100 and reboot the device, e.g. by pressing the hard reset button (located in the little hole to the right of the SD card slot) or simply by unplugging and re-plugging the power supply cable.



7 List of Figures

Figure 1 – Source Device Selection	7
Figure 2 – Target Device Selection.....	7
Figure 3 – Copying the Image to the USB Stick	8